

ASSEMBLY.

YOKE.

ARCING HORN.

CLEVIS EYE.

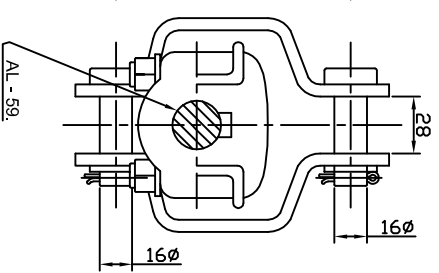
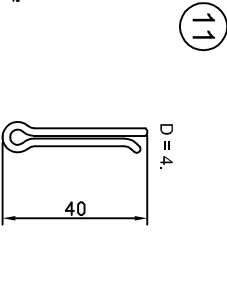
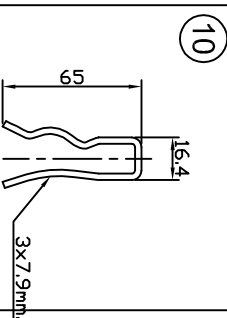
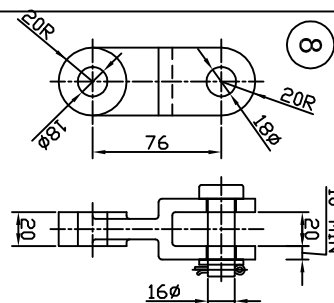
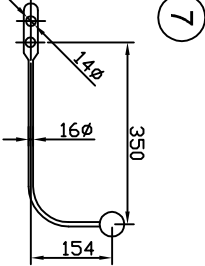
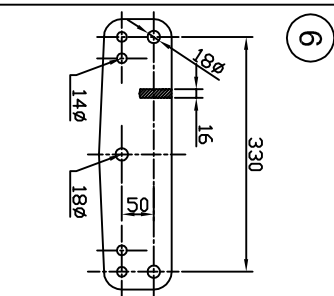
EYE HOOK.

CLEVIS - CLEVIS.

YOKE.

BALL CLEVIS

SOCKET CLEVIS



- NOTES:-
- 1 - ALL DIMENSIONS ARE IN MM.
 - 2 - DIMENSIONS NOT TO SCALE.
 - 3 - GENERAL TOLERANCEN ±5%
 - 4 - MECH. FAILING LOAD 50% UTS OF CONDUCTOR.
 - 5 - SLIP STRENGTH 8 TO 15% UTS OF CONDUCTOR.
 - 6 - IS: 2486. PART - I. 1993.

SR. NO.	DESCRIPTION	QTY.	SPECIFICATION
11	SPLIT PIN.	8	BRASS / S.S.
10	R - CLIP.	2	S. S. / P. B.
9	SUSPENSION CLAMP.	1	ALU. ALLOY & STEEL.
8	CLEVIS EYE.	2	F. S. / HDG.
7	ARCING HORN.	2	M. S. HDG.
6	YOKE.	1	M. S. HDG.
5	SOCKET CLEVIS.	2	FORGED STEEL. HDG.
4	BALL CLEVIS.	2	FORGED STEEL. HDG.
3	YOKE.	1	M. S. HDG.
2	CLEVIS - CLEVIS.	1	STEEL. HDG.
1	EYE HOOK.	1	FORGED STEEL. HDG.



GUARAT ENERGY TRANSMISSION CORP.LTD.
S.P.VIDYUT BHAVAN, RAJCE COURSE,
VADODRA - 390 007

TENDER PURPOSE

220KV DOUBLE SUSPENSION
HARDWARE FOR AL - 59.

DRAWN	CHECKED	ASPD	SCALE	DATE	DRG. NO.	GETCO / E /	SHEET	REV.	AS
						2L-STD / AL59 HW-DSN 002	1 OF 1		RO